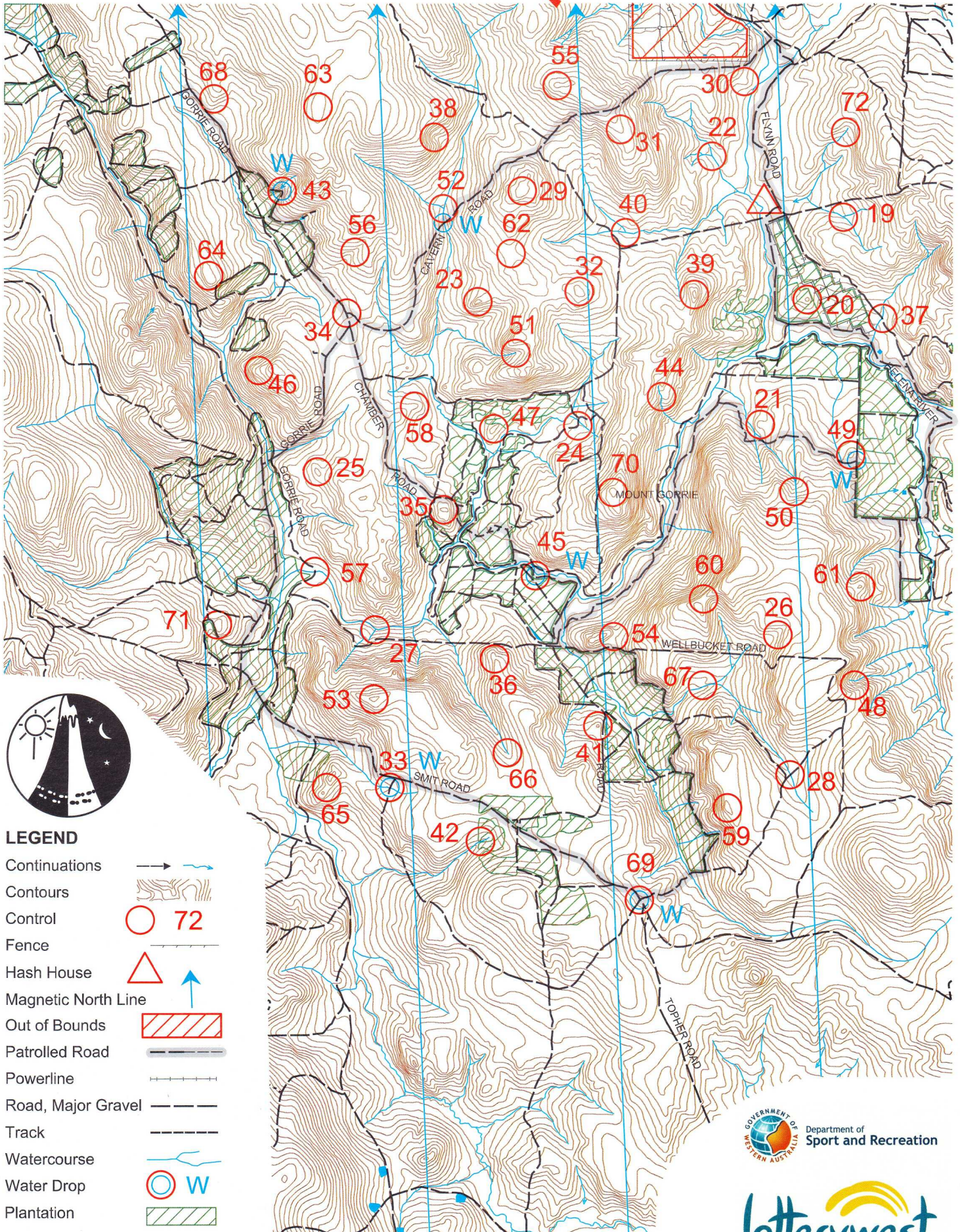


The Corflute Quest

WARA 6hr Rogaine
17th November 2007



LEGEND

- Continuations
- Contours
- Control
- Fence
- Hash House
- Magnetic North Line
- Out of Bounds
- Patrolled Road
- Powerline
- Road, Major Gravel
- Track
- Watercourse
- Water Drop
- Plantation

SCALE 1:50,000
5 metre contour interval

0km 1km 2km

Setters and Vettors:
Warren Smith, Al Jansen, Alexia Horton, Ashley Horton



This map was produced using OCAD 9 by the Western Australian Rogaining Association, wa.rogaine.asn.au.
Data supplied by DOLA and used under copy licence 393/93. Possession of this map does not give right of entry to this area.

The Corflute Quest. WARA's Spring 6hr Rogaine, 17th November 2007.

No.	Description	Points	No.	Description	Points	Important Information
			43	Track bend (Water)	60	<u>Registration</u> From 13:00 hrs <u>Control Cards issued</u> From 14:30 hrs <u>Pre-event briefing commences</u> 14:45 hrs <u>Event starts</u> 15:00 hrs <u>Event Finishes</u> 6hrs later <u>Late Penalties applied</u> 10 points per minute or part thereof. Disqualification occurs if more than 30 mins late. <u>Sunset</u> 19:55 hrs <u>Moonrise</u> 23:57 hrs <u>Hash House</u> There is no Hash House at this event. <u>Number of Controls used</u> 54 <u>Total Points</u> 3300 Points will be gained for mispunches only if you inform administration of the mistake immediately upon your return. If you have not queried your controls visited with administration within 30 minutes of the close of the event then your score will be finalised.
			44	The watercourse	60	
			45	The southern track bend (Water)	60	
			46	The spur	60	
			47	The knoll	60	
			48	Head of a watercourse	60	
			49	The knoll (Water at track corner)	70	
19	The watercourse junction	30	50	The watercourse	70	
20	The knoll	30	51	The watercourse	70	
21	The spur	30	52	The watercourse junction (Water at track)	70	
22	The watercourse junction	30	53	The knoll	70	
23	The knoll	30	54	The saddle	70	
24	The watercourse / track crossing	30	55	The broad knoll	80	
25	The knoll	30	56	The gully	80	
26	The gully	30	57	The watercourse / track crossing	80	
27	The watercourse junction	30	58	The spur	80	
28	The watercourse / track crossing	30	59	The knoll	80	
29	The knoll	30	60	The saddle	80	
30	The spur	30	61	The spur	90	
31	The spur	40	62	The broad saddle	90	
32	The knoll	40	63	The broad knoll (northern end)	90	
33	The watercourse / track crossing (Water)	40	64	The knoll	90	
34	The track junction	40	65	The saddle	90	
35	The knoll	40	66	The broad gully	90	
36	The saddle	40	67	A watercourse junction	100	
37	Watercourse / track crossing	50	68	The spur	100	
38	The gully	50	69	The track junction (Water)	100	
39	The knoll	50	70	The summit	100	
40	The watercourse junction	50	71	The knoll	100	
41	The knoll	50	72	The watercourse	100	
42	The watercourse	50				

In case of trouble/emergency please make you way to the nearest water drop or patrolled road. These are patrolled every 2 or 3 hours. Patrol cars have a green flashing light. Water drops are at or near controls 33, 43, 49, 52, 63, 69